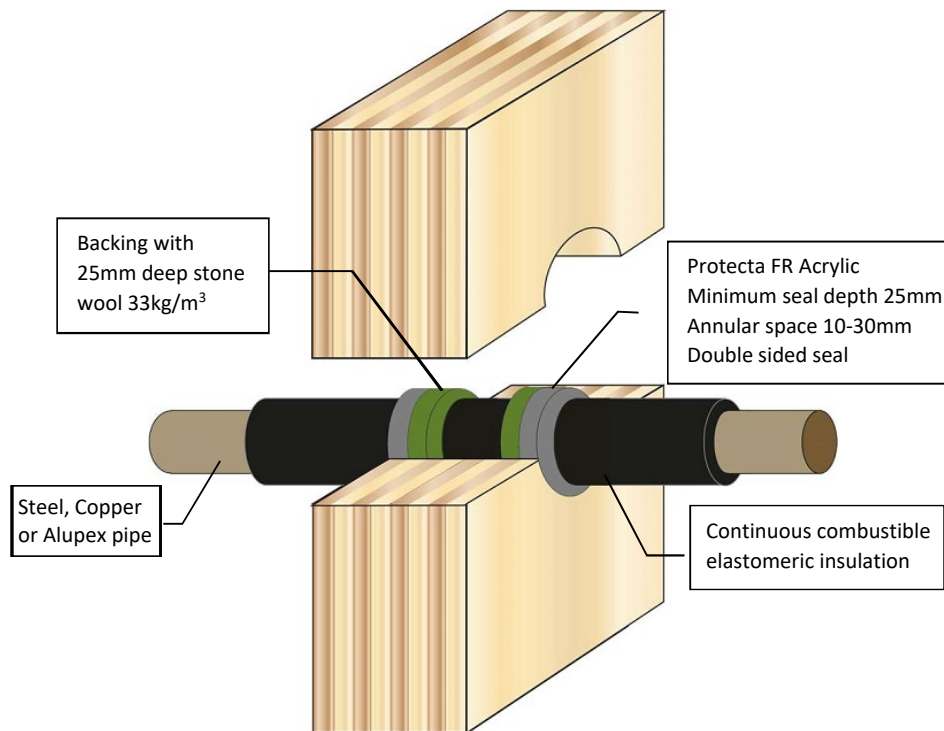


## Protecta FR Acrylic -100mm Solid Timber or CLT Metal Pipe - Steel, Copper, Alupex Insulation - Continuous Combustible (Elastomeric) or any Non-combustible

System/FPA Register ID# FC109

### Installation Instructions

1. Before installing Protecta® FR Graphite ensure that the surface of all service penetrations and surrounding construction is free from all loose contaminants, dust and grease.
2. Install the backing material. Cut this slightly oversize and insert into the gap ensuring a tight friction fit. Ensure correct depth is achieved.
3. Fill the gap or joint with Protecta® FR Graphite on both sides to the required depth.
4. Apply the sealant generously avoiding air bubbles. Finish the bead with a moist spatula or pallet knife. Avoid excessive tooling/smoothing as this may make the seal surface wet and soft.
5. Protecta® FR Graphite can be over-painted with most emulsion or alkyd (gloss) paints.



<b>Products</b>	Protecta FR Acrylic
<b>Application</b>	Fire stopping of metal pipes with combustible insulation in timber walls
<b>Construction</b>	Minimum wall thickness of 100 mm and comprise solid wood or cross-laminated timber minimum density of 510kg/m <sup>3</sup>

### Fire & Sound classification

**Steel** pipes up to 114mm diam with 9-25mm thick insulation FRR -/30/30

**Copper or steel** pipes up to 54mm diam with 9mm thick insulation FRR -/60/30

Copper or steel pipes up to 54mm diam with 10-25mm thick insulation FRR -/30/15

**Alupex** pipes up to 75mm diam with 9mm thick insulation FRR -/60/45

Alupex pipes up to 75mm diam with 10-25mm thick insulation FRR -/45/45

ZERO Smoke leakage up to 200Pa

Sound reduction (seal only) STC 62

NOTE: Results for combustible insulation may be applied to equivalent non-combustible insulation (Warringtonfire FAS190390 Pg 6)

As a part of our policy of on-going product development and testing, we reserve the right to modify, alter or change product specifications without giving notice. All information contained in this document is given in good faith and is provided for guidance only. Any drawings provided are for illustrative purposes only. As Polyseam has no control over the methods or competence of installation and of prevailing site conditions, no warranties, expressed or implied, is intended to be given as to the actual performance of the product mentioned or referred to herein and no liability whatsoever will be accepted for any loss, damage or injury arising from the use of the information given.